

Scalable Best Practices

Palghar District Administration

Saurabh Katiyar

IAS 2016 batch

8 February 2019
Assistant Collector



विद्युत विभाग
DEPARTMENT OF
PUBLIC ENTERPRISES



कोयला विभाग
Coal India Limited
विद्युत विभाग
विद्युत विभाग

District Profile

01

Palghar came into existence on 1st August 2014

02

Population of around 30 lakhs

03

Palghar is primarily a tribal dominated district

04

Facing issues like malnutrition, child mortality, maternal mortality, migration and limited employment opportunities

Palghar Development Corridor

01

Need arose because of stiff resistance of tribal people against land acquisition for big projects like Bullet Train

02

Hence District Collector conceptualized PDC to give local people some stake in development process

03

100% survey of PDC villages done to understand needs of villages and Village Development Plan completed

04

Funds gathered from converging various government schemes, CSR Fund and some funds from NHSRCL

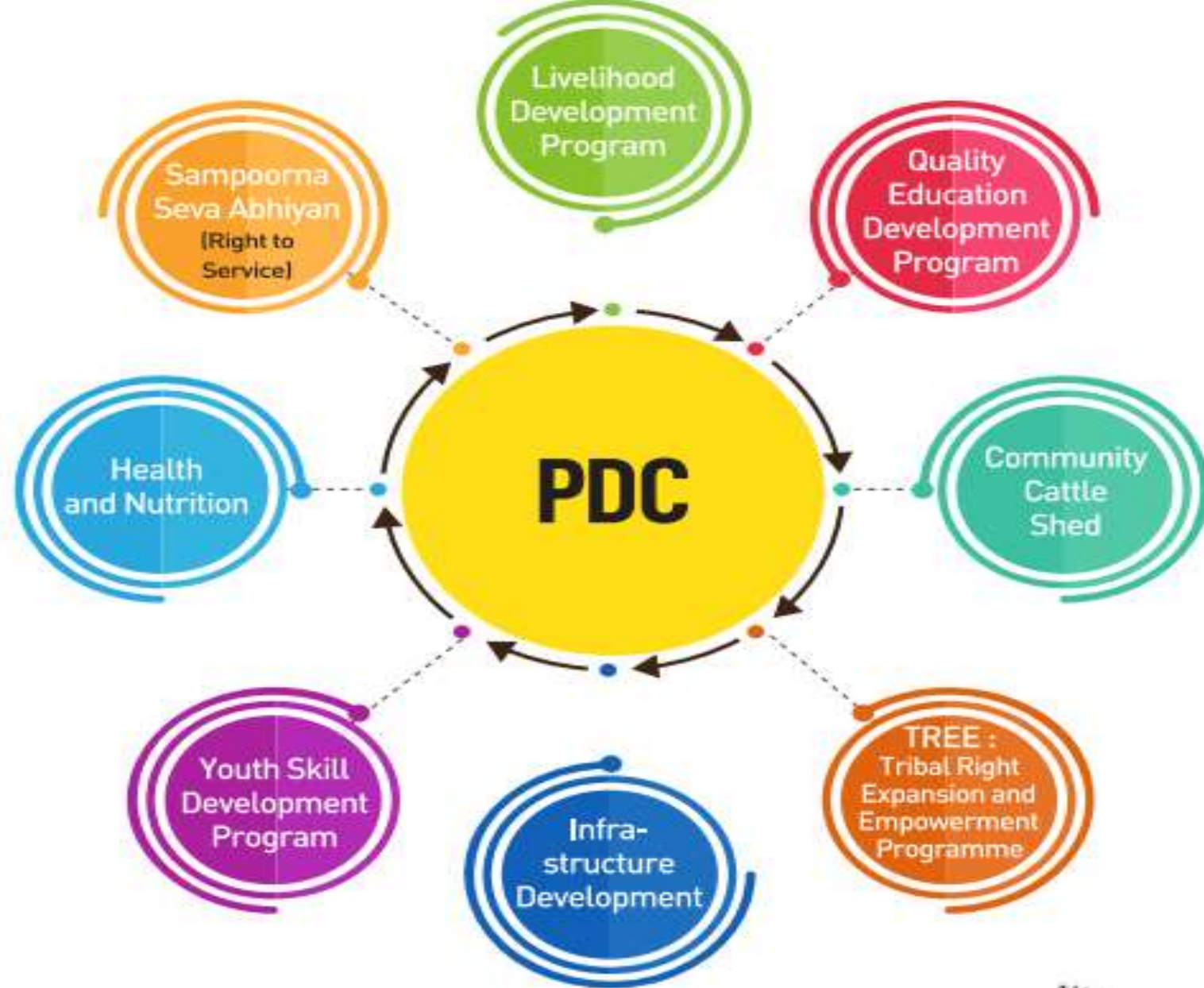
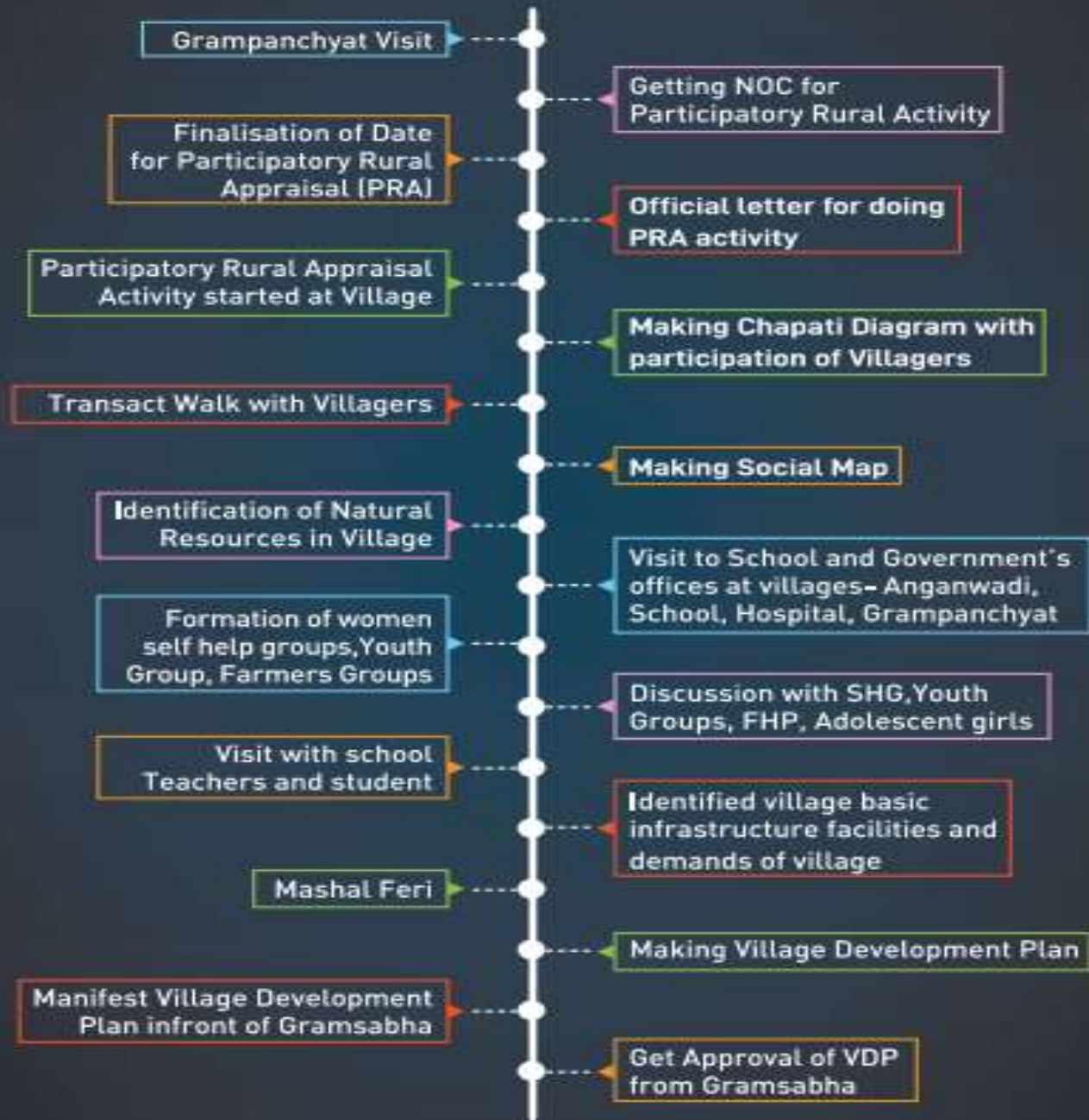


Diagram: Component of PDC

1.2 Components of Palghar Development Corridor (Village Development Plan)



T
9

Digitized by
eGangotri
India Limited

Discussion
With Women
SHG



Project Arogya Vardhan



Organisation of camps and Awareness Programme

- Punaragaman Shibir
- Special Camps for migrant population
- Mega Health Fair
- Kishori Prashikshan Programme
- Cultural programme
- Sick cell illness control program
- ARS Clinic

Infrastructure Development

- Sickle Cell Anemia Unit
- Mobile Medical Unit (MMU)
- Home Based Newborn Care
- Child Treatment Centre
- Nutrition Rehabilitation Centre
- Facility of Sonography of pregnant mother

State & District Innovative Scheme

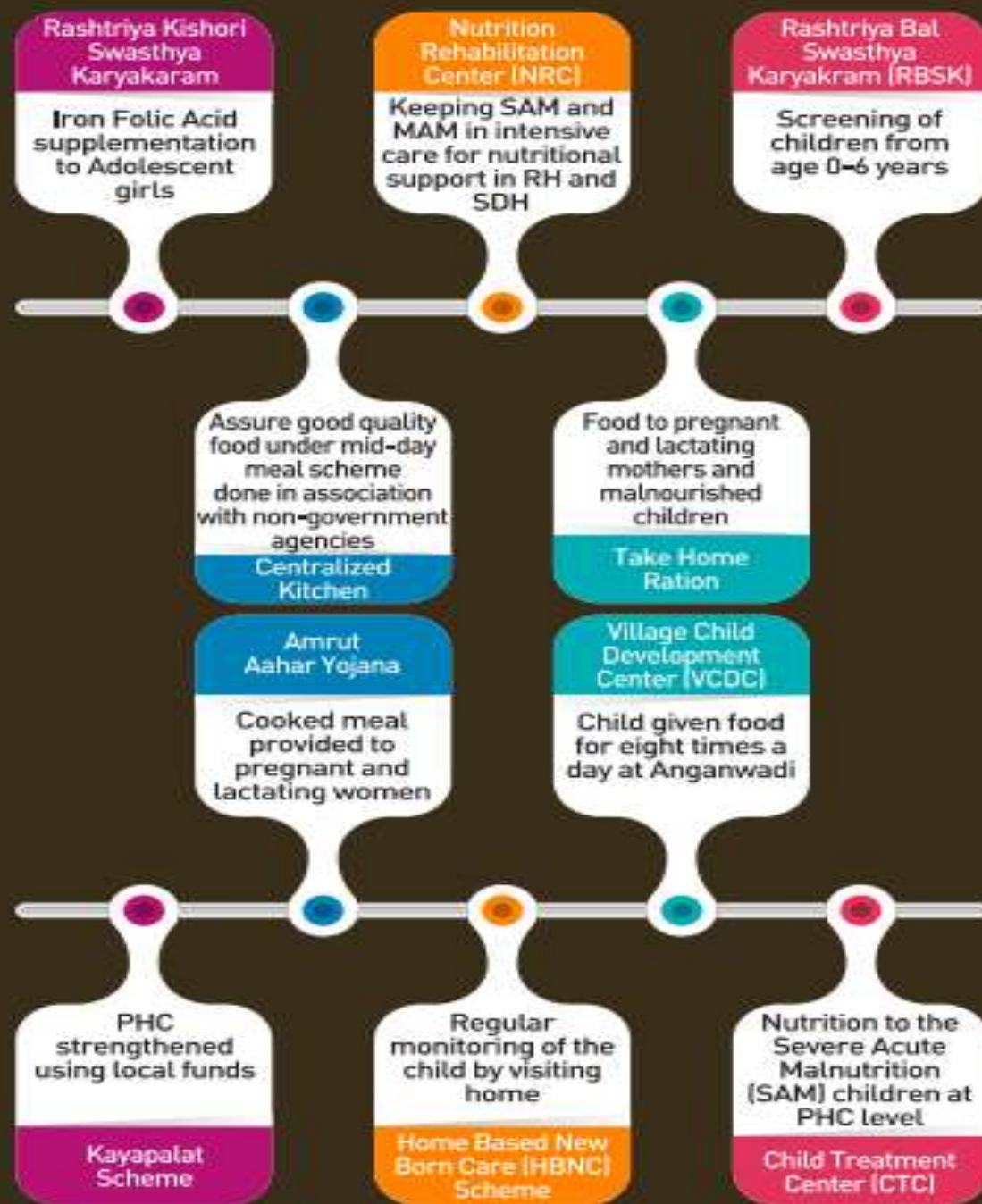
- Godhadi Yojana
- Kayapalat Scheme
- Bhagat and Dai Yojana
- Dattak Palak Yojana
- Mother home scheme
- Amrut Ahar Yojana
- Sanjay Gandhi unfounded grant scheme
- Pradhan Mantri Secured Maternity Mission
- Mid-day meal scheme
- National Child Health Mission

Other Activities

- Partnership with NGOs, UNICEF, and local retailer
- Tuberculosis screening
- Make public grievance cell
- Matritva Sanwardhan Diwas
- Sick cell illness control program
- Village Child Development Centre



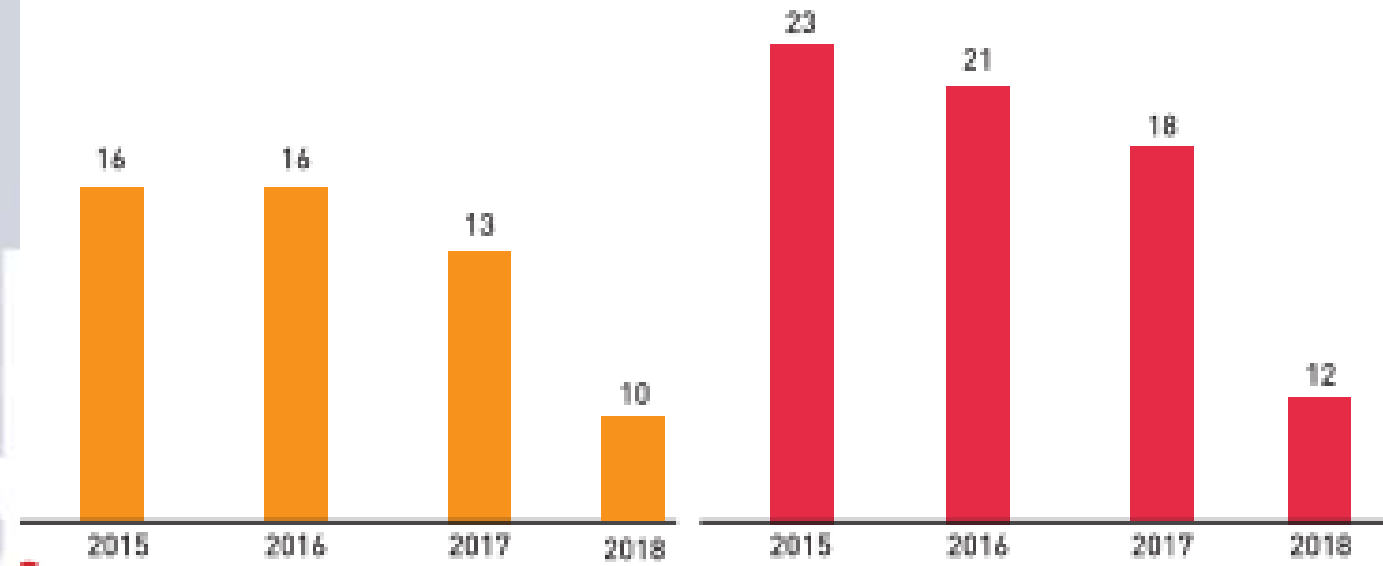
Some Components of Project Arogya Vardhan



NT
019

■ Infant Mortality Rate

■ Child Mortality Rate



Livelihood Intervention Programme

- Cluster Approach
 - Mogra cluster - collaboration with IIIT Bombay
 - Cluster - Chik processing centre
- Swarnam Project
 - Cluster based poultry project
 - Providing livelihood as well as addressing malnutrition
- Community Workshop

DISTRICT DEVELOPMENT DIALOGUE 2019

SCALABLE BEST PRACTICES
LEARNINGS FROM THE FIELD

8 February 2019



भारत सरकार
DEPARTMENT OF
PUBLIC ENTERPRISES



भारत कोयला लिमिटेड
Coal India Limited
भारत कोयला लिमिटेड
भारत कोयला लिमिटेड



Mogra cluster was initiated with the help of IIT, Powai. IIT provided accessible technology to enhance rate of harvest of mogra flowers & low cost cooling technology to increase shelf life of the flowers



विश्व भारती
DEPARTMENT OF
PUBLIC ENTERPRISES



विश्व भारती
Cool India Limited
विश्व भारती, दिल्ली
www.coolindia.com



Community
Workshop, Keli
Road



Established
Community
workshop
at Modgaon,
Dahanu Block,
Palghar

8 Fe



वि. प्र. उ. प्र. उ.
DEPARTMENT OF
PUBLIC ENTERPRISES



The background is an abstract composition of various triangles. The top and bottom edges are decorated with a dense border of small, brightly colored triangles in shades of cyan, magenta, lime green, dark blue, orange, and red. The central portion of the image is a large, irregular white space, which is itself composed of several large, light gray triangles that meet at various angles, creating a subtle geometric pattern.

THANK YOU